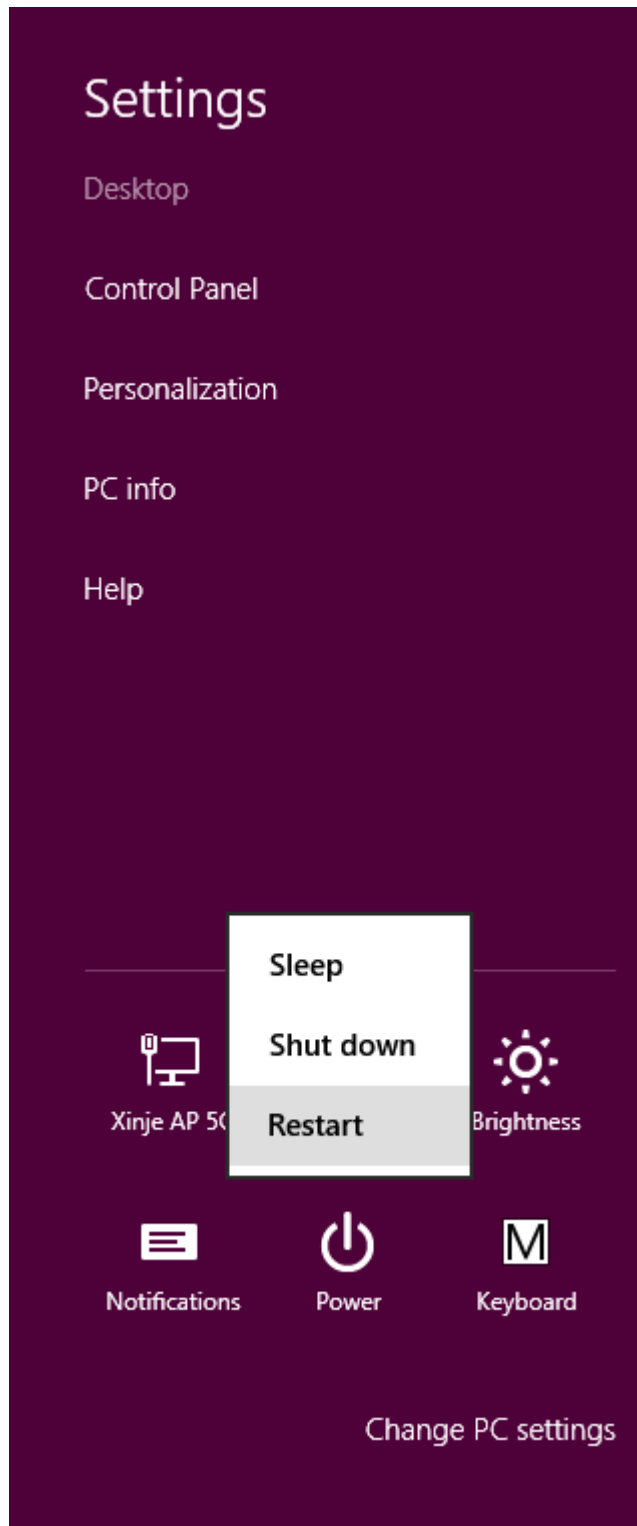
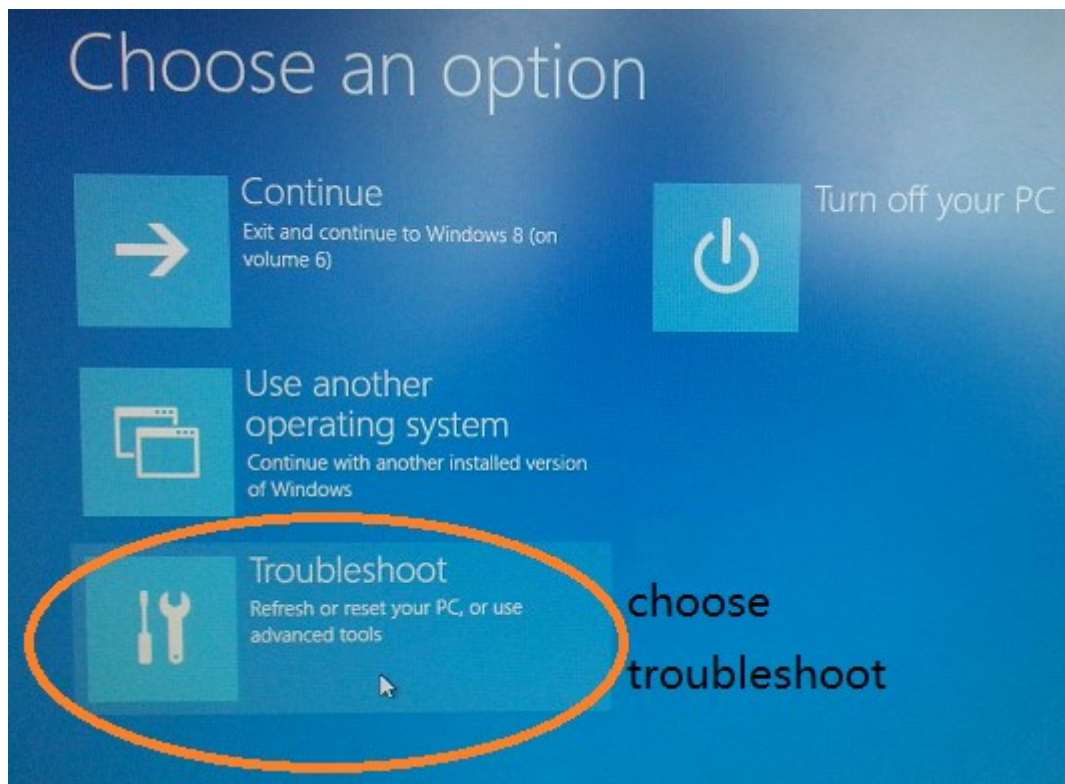


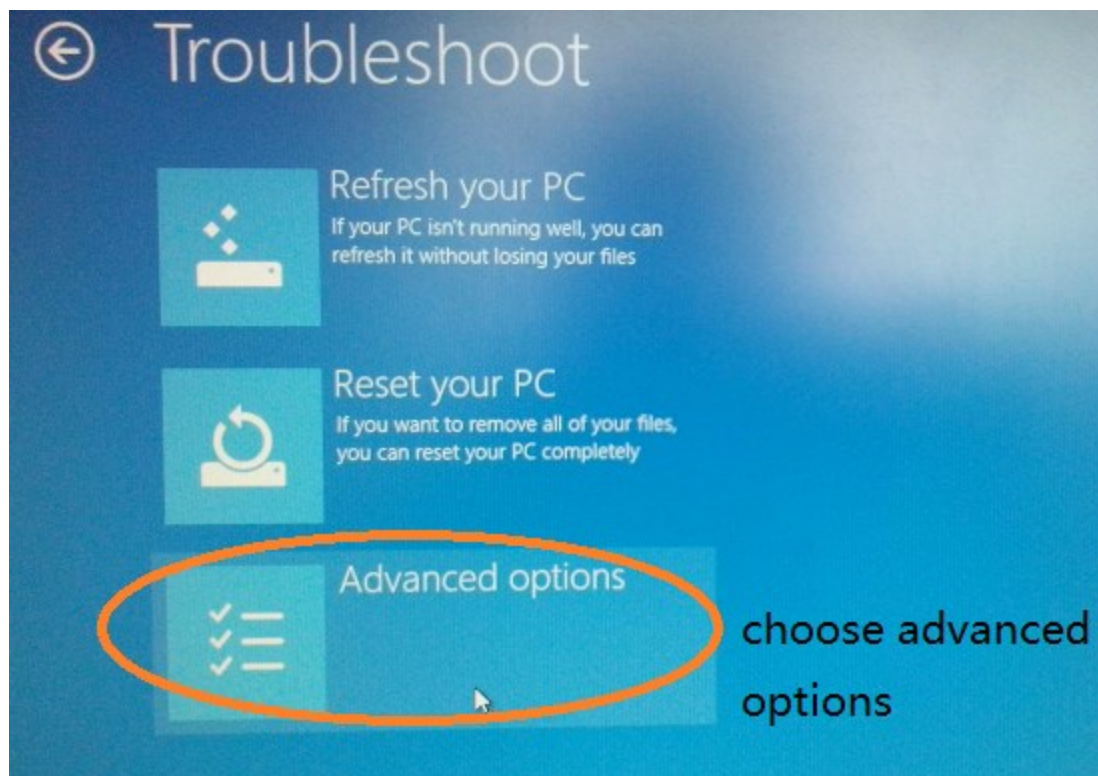
Press windows + I button on the PC keyboard to open the PC setting window. Then press shift button on the keyboard, at the same time click the Power button, choose restart. Then the PC will enter advanced options.



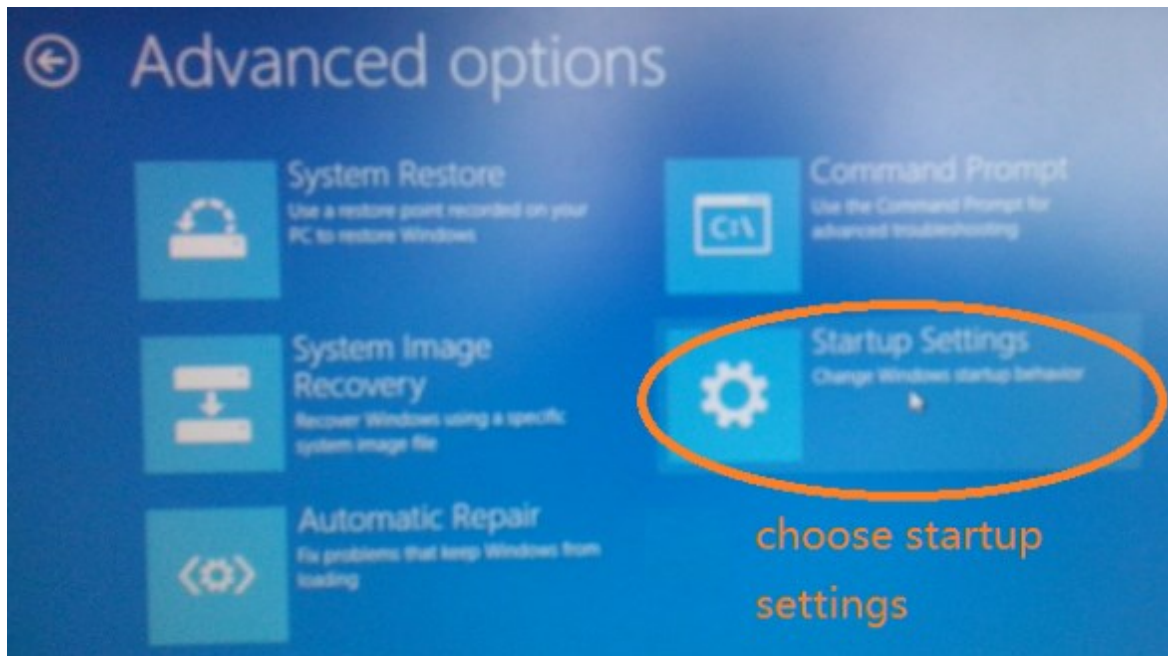
Choose troubleshoot



Choose advanced options



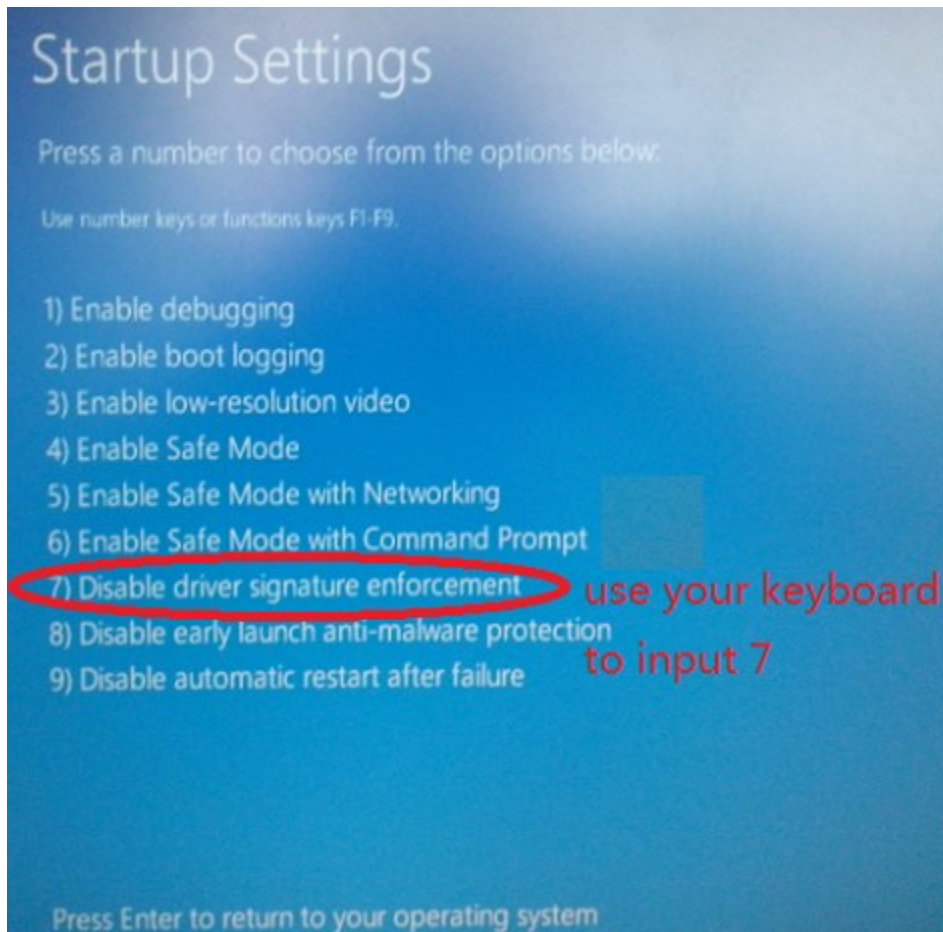
Choose startup settings



Choose restart



Choose item 7



The PC settings finished.

Then install the driver:

If the system is win8.1 32-bit, please install win7 32-bit driver.

If the system is win8.1 64-bit, please install win7 64-bit driver.