

**GLOBAL  
MEKATRONİK®**

**XINJE**

## **XSF5-A8 İLE CODESYS V3.5 SP21'DE XF- E16YT KULLANIMI**

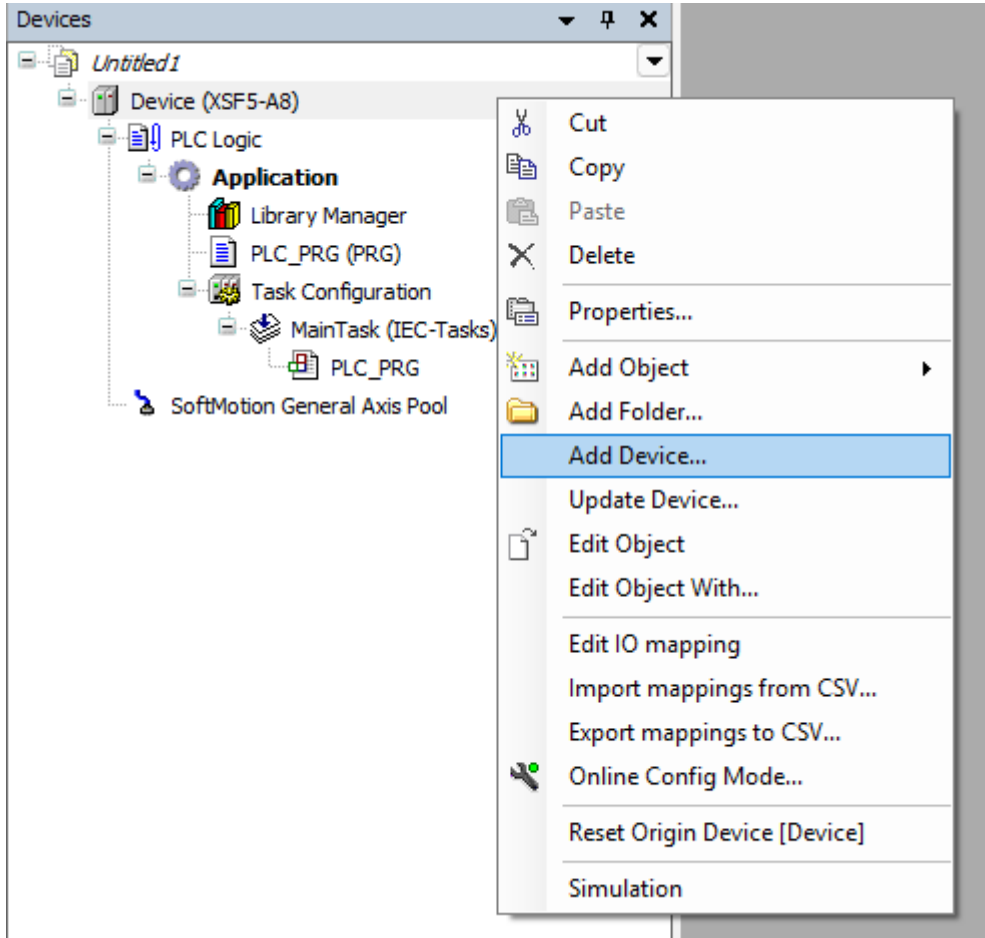


03.10.2026  
Global Mekatronik Sistemleri  
Hazırlayan: Evren Tülü

Bugün XINJE XSF5-A8 ile CODESYS V3.5 SP21 programında XF-E16YT kullanımı için proje oluşturacağız.

## ADIM 1 :

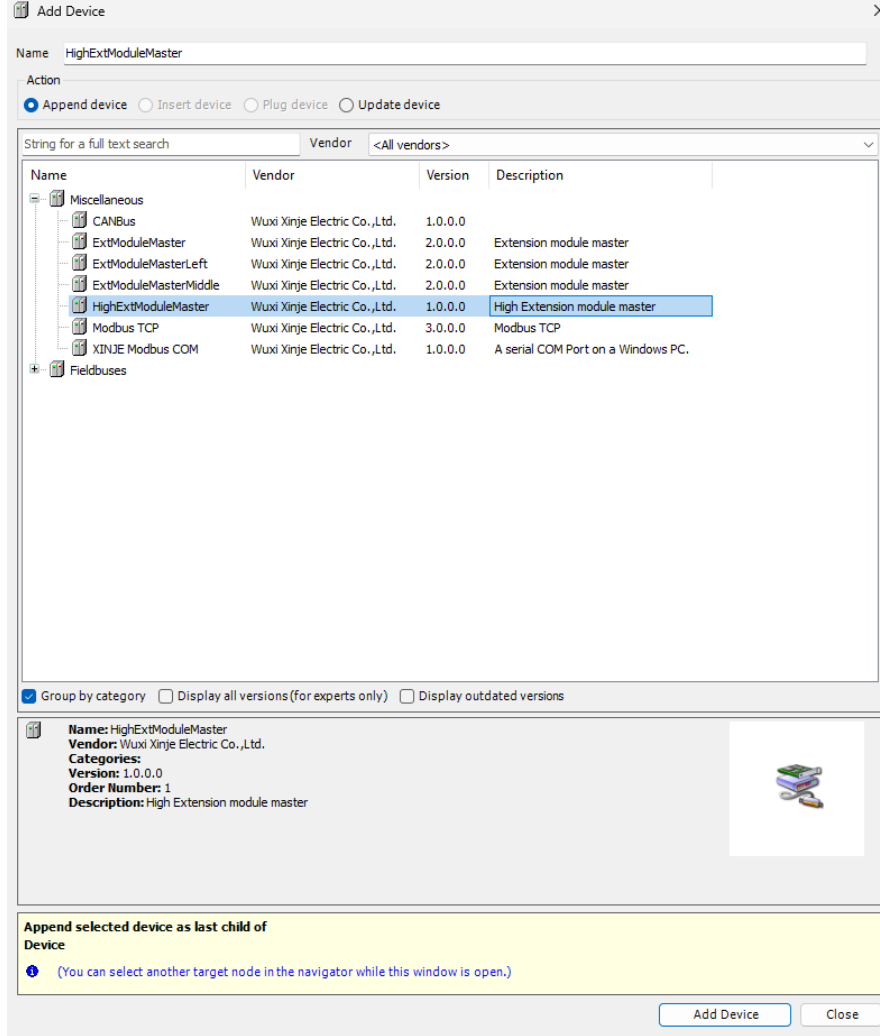
Device'a sağ tıklayıp , Add Device'ı seçiyoruz.



Şekil 1.0

## ADIM 2 :

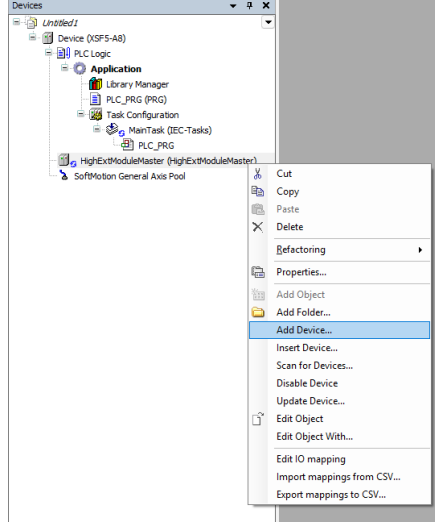
Açılan pencerede Miscellaneous altında HighExtModuleMaster'ı seçiyoruz ve Add Device'a tıklıyoruz.



Şekil 2.0

### ADIM 3 :

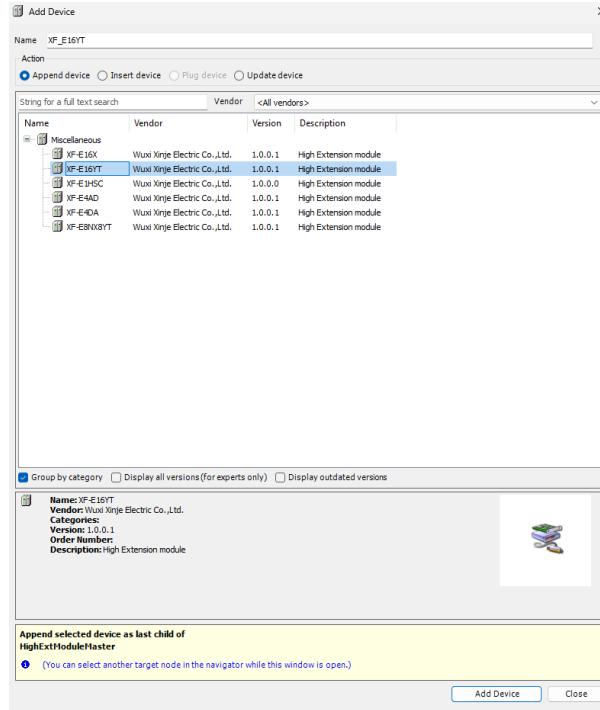
Proje ağacımızda oluşan HighExtModuleMaster'a sağ tıklıyoruz.Ardından Add Device'a tıklıyoruz.



Şekil 3.0

### ADIM 4 :

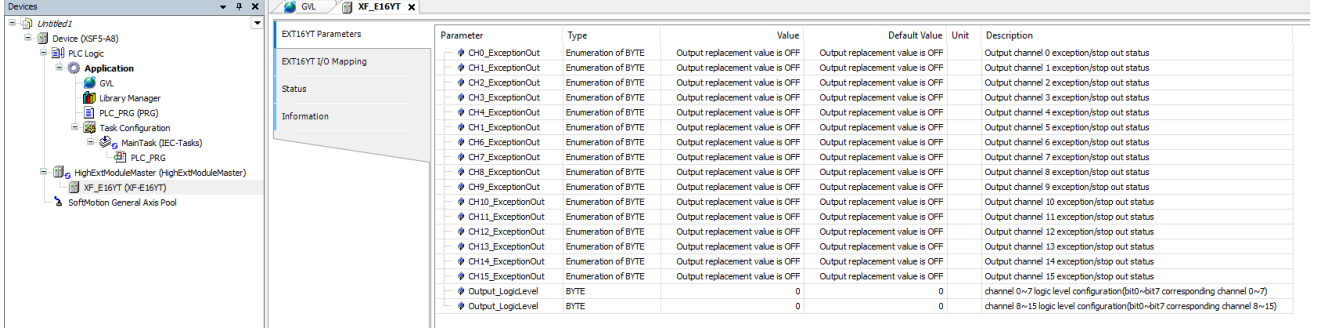
Açılan pencerede XF-E16YT cihazını seçiyoruz ve Add Device'a tıklıyoruz.



Şekil 4.0

## ADIM 5 :

Proje ağacında oluşan XF\_E16YT cihazına tıklıyoruz.Karşımıza görseldeki pencere gelecektir.Bu pencerede CHx\_ExceptionOut kısımları, çıkışların durdurulma konfigürasyonları için kullanılmaktadır.

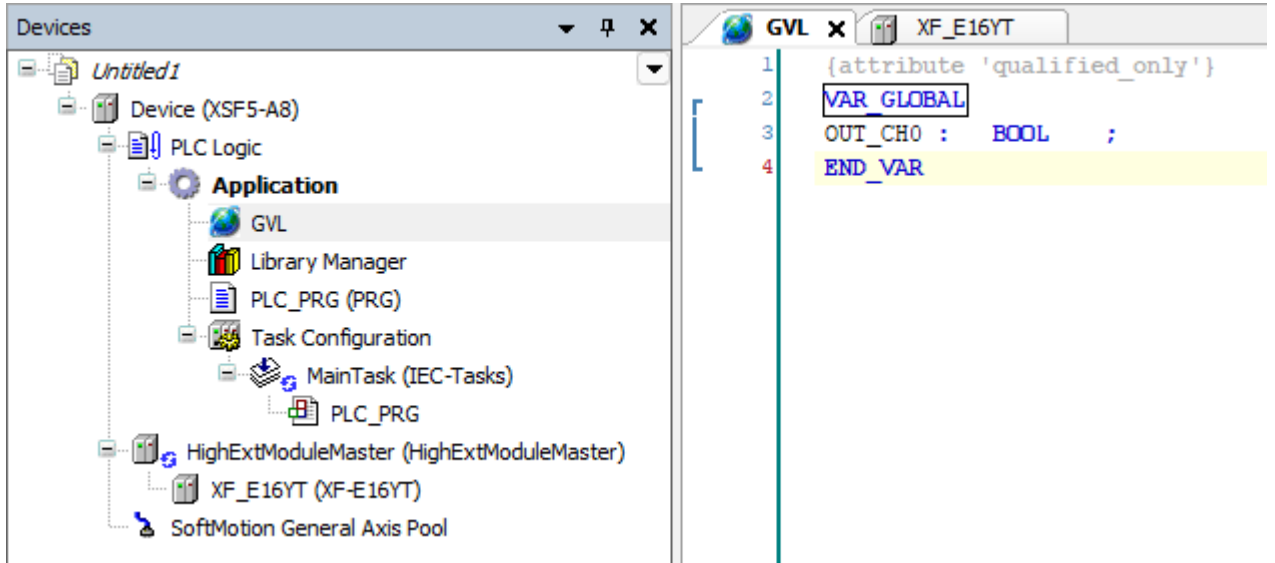


Parameter	Type	Value	Default Value	Unit	Description
CH0_ExceptionOut	Enumeration of BYTE	Output replacement value is OFF	Output replacement value is OFF		Output channel 0 exception/stop out status
CH1_ExceptionOut	Enumeration of BYTE	Output replacement value is OFF	Output replacement value is OFF		Output channel 1 exception/stop out status
CH2_ExceptionOut	Enumeration of BYTE	Output replacement value is OFF	Output replacement value is OFF		Output channel 2 exception/stop out status
CH3_ExceptionOut	Enumeration of BYTE	Output replacement value is OFF	Output replacement value is OFF		Output channel 3 exception/stop out status
CH4_ExceptionOut	Enumeration of BYTE	Output replacement value is OFF	Output replacement value is OFF		Output channel 4 exception/stop out status
CH5_ExceptionOut	Enumeration of BYTE	Output replacement value is OFF	Output replacement value is OFF		Output channel 5 exception/stop out status
CH6_ExceptionOut	Enumeration of BYTE	Output replacement value is OFF	Output replacement value is OFF		Output channel 6 exception/stop out status
CH7_ExceptionOut	Enumeration of BYTE	Output replacement value is OFF	Output replacement value is OFF		Output channel 7 exception/stop out status
CH8_ExceptionOut	Enumeration of BYTE	Output replacement value is OFF	Output replacement value is OFF		Output channel 8 exception/stop out status
CH9_ExceptionOut	Enumeration of BYTE	Output replacement value is OFF	Output replacement value is OFF		Output channel 9 exception/stop out status
CH10_ExceptionOut	Enumeration of BYTE	Output replacement value is OFF	Output replacement value is OFF		Output channel 10 exception/stop out status
CH11_ExceptionOut	Enumeration of BYTE	Output replacement value is OFF	Output replacement value is OFF		Output channel 11 exception/stop out status
CH12_ExceptionOut	Enumeration of BYTE	Output replacement value is OFF	Output replacement value is OFF		Output channel 12 exception/stop out status
CH13_ExceptionOut	Enumeration of BYTE	Output replacement value is OFF	Output replacement value is OFF		Output channel 13 exception/stop out status
CH14_ExceptionOut	Enumeration of BYTE	Output replacement value is OFF	Output replacement value is OFF		Output channel 14 exception/stop out status
CH15_ExceptionOut	Enumeration of BYTE	Output replacement value is OFF	Output replacement value is OFF		Output channel 15 exception/stop out status
Output_LogicalLevel	BYTE	0	0		channel 0~7 logic level configuration(bit0-bit7 corresponding channel 0~7)
Output_LogicalLevel	BYTE	0	0		channel 8~15 logic level configuration(bit0-bit7 corresponding channel 8~15)

Şekil 5.0

## ADIM 6 :

Bir GVL oluşturuyoruz.Biz OUT\_CH0'ı giriş için tanımladık.



```

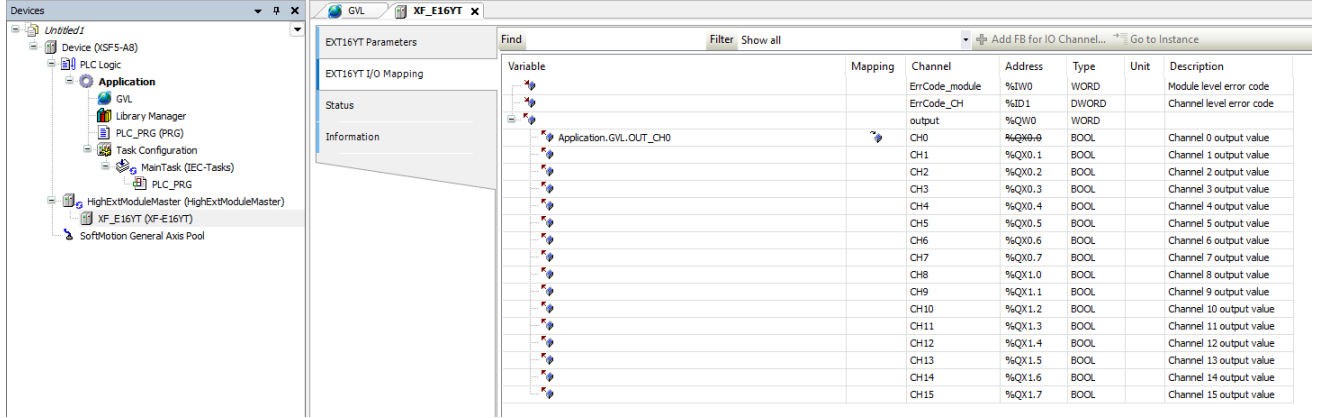
1 {attribute 'qualified_only'}
2 VAR GLOBAL
3 OUT_CH0 : BOOL ;
4 END_VAR

```

Şekil 6.0

## ADIM 7 :

XF\_E16YT cihazına tıklıyoruz.Açılan pencerede EXT16YT I/O Mapping'e tıklıyoruz.Ardından görseldeki gibi değişkenimizi tanımlıyoruz.Bu işlemten sonra GVL içerisinde tanımlamış olduğumuz OUT\_CH0 modülün birinci girişinin değerini verecektir.



Şekil 7.0

**GLOBAL**  
**MEKATRONİK®**

Ziya Gökalp , Bedrettin Dalan Blv  
Metro34 İş Merkezi No:21-22  
İkitelli OSB - Başakşehir  
İSTANBUL

[teknik@globalmekatronik.com](mailto:teknik@globalmekatronik.com)

+90 212 674 73 00

+90 212 674 73 06